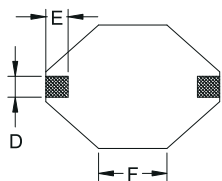
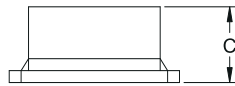
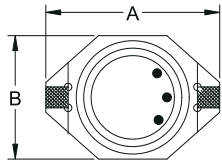
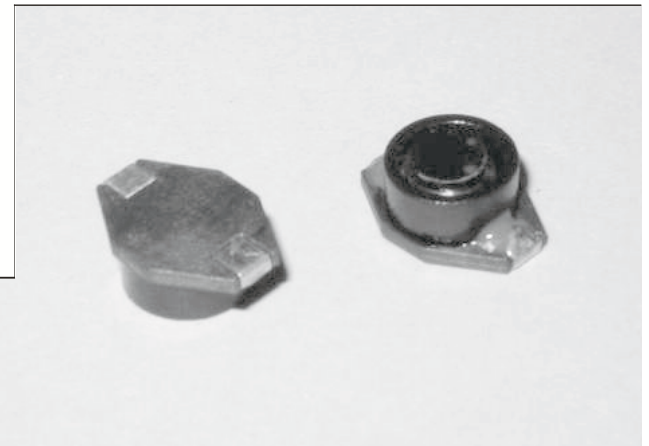


HCPS191507 TYPE

CONSTRUCTION (m/m)



A: 18.5 MAX. B: 14 ± 0.5
C: 7.62 MAX. D: 2.54
E: 2.54 F: 7.62



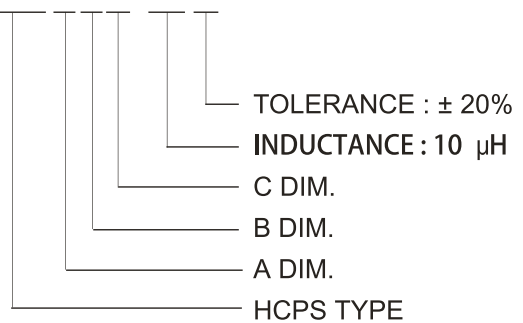
ELECTRICAL SPECIFICATION

ITEM	L (μH)	DCR MAX. (Ω)	SRF MIN. (MHz)	IDC1 MAX. (A)	IDC2 MAX. (A)
100M	10 ± 20%	30.0	0.04	6.00	3.90
150M	15 ± 20%	20.0	0.048	5.50	3.40
220M	22 ± 20%	18.0	0.059	4.10	3.10
330M	33 ± 20%	14.0	0.075	4.00	2.80
470M	47 ± 20%	10.0	0.097	3.20	2.40
680M	68 ± 20%	9.0	0.138	2.50	2.00
101M	100 ± 20%	7.0	0.207	2.10	1.70
151M	150 ± 20%	6.0	0.293	1.70	1.30
221M	220 ± 20%	5.0	0.470	1.50	1.10
331M	330 ± 20%	4.0	0.780	1.10	0.86
471M	470 ± 20%	3.0	1.080	1.00	0.73
681M	680 ± 20%	2.5	1.400	0.82	0.64
102M	1000 ± 20%	2.0	2.010	0.70	0.53

SPECIALIZE IN HIGH CURRENT & HIGH
INDUCTANCE FOR SMD INDUCTORS

COIL CODE

HCPS 1915 07 100 M



CHARACTERISTICS

- TESTED AT 100 KHz, 0.1 VRMS
- OPERATING TEMPERATURE RANGE :
-40°C TO +85°C
- ELECTRICAL SPECIFICATIONS AT 25°C
- IDC2; BASE ON TEMP. (AT=30°C)

* Hong can design any part to your requirements with different inductance.

* All parameters as this content presented are subject to final specifications both sides confirmed.